

**FlowCon ABM1**  
DN15/20/25 · 1/2", 3/4", 1"

No. Reference no. Description

**Valve body**

① ABM1.x Valve body

**Cartridges**

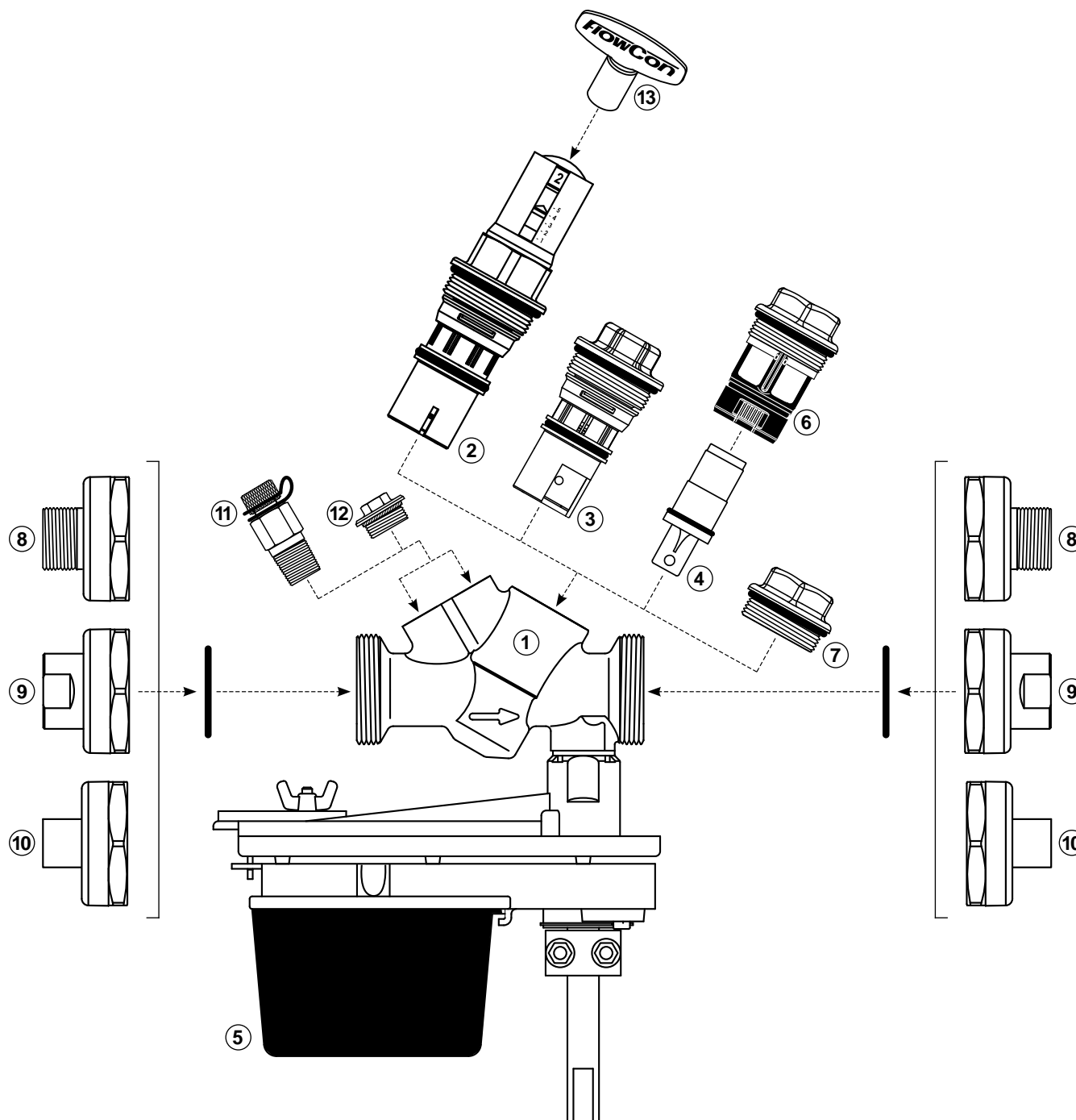
② E-JUST1.x.x E-JUST cartridge  
③ ABV1.x.x Composite cartridge  
④ F360xxx SS cartridge

**Actuator**

⑤ BBxxxx Electrical actuator

**Accessories**

⑥ ACC0150 Adaptor for SS cartridge  
⑦ ACC0080 Blind cap  
⑧ 1C000xx Male union end conn. 15-25mm (1/2"-1")  
⑨ 1C000xx Female union end conn. 15-20mm (1/2"-3/4")  
⑩ 1C000xx Sweat union end conn. 15-22mm  
⑪ 2 x ACC00101 P/t plug  
⑫ 2 x ACC1B03000 Plug  
⑬ ACC0001 Adjustment key



**FlowCon ABM2**  
DN25/32/40 · 1", 1 1/4", 1 1/2"

No. Reference no. Description

**Valve body**

① ABM2.x Valve body

**Cartridges**

② E-JUST2.Y.G E-JUST cartridge  
③ ABV2.x.x Composite cartridge  
④ F361xxx SS cartridge

**Actuator**

⑤ BBxxxxx Electrical actuator

**Accessories**

⑥ ACC0160 Adaptor for SS cartridge  
⑦ ACC0081 Blind cap  
⑧ 1C000xx Male union end conn. 25-40mm (1"-1 1/2")  
⑨ 1C000xx Female union end conn. 25-40mm (1"-1 1/2")  
⑩ 1C000xx Sweat union end conn. 28-35mm  
⑪ 2 x ACC00101 P/t plug  
⑫ 2 x ACC1B03000 Plug  
⑬ ACC0001 Adjustment key

